

## CUTTING BOARDS FOR GASTRONOMY AND HOUSEHOLD

The high quality of **KOTERM PE 500 cutting and chopping boards**, respectively, allows their use in restaurant and hotel kitchens, private households, bakeries, and the like. They are successfully employed in industries for the preparation and processing of meat products, in the fish-processing industry, as well as all manufacturing plants utilizing contemporary technologies.

### KOTERM PE500 (PE HMW)

High molecular weight polyethylene

#### Material properties:

- Physiologically innocuous material PE500 (in compliance with FDA standards)
- Easy cleaning( allowed in a dish-washer)
- Highly resistant to notching-harmless to blades
- Highly resistant to chemicals and corrosion
- Does not absorb odour, moisture, water or liquids
- Good impact strength
- Possesses very good processing properties
- Low coefficient of friction
- Very good electric specific resistance and dielectric strength
- Puncture-resistant

#### Areas of use:

- Food processing industry
- Bakeries
- Households
- Slaughterhouses

#### Examples of use:

- |                    |  |
|--------------------|--|
| ● Kitchen counters | ● Butcher counters                       |
| ● Cutting boards   | ● Knife handles                          |
| ● Butcher blocks   | ● Transport models                       |
| ● Graters          | ● Conveying elements                     |
| ● Ladles           | ● Protective linings in cooling chambers |
| ● Meat hammers     | ● Refrigerator shelves                   |
| ● Rolling pins     | ● Refrigerator doors                     |
| ● Pushers          | ● Cheese, fish and ham moulds            |



# KOTERM KITCHEN BOARDS

## Shapes and Types:

- Type ON - surface planed, sharp edges
- Type OK - surface planed, sharp edges with juice groove
- Type OKT - surface planed, sharp edges with juice groove and collection point
- Type PN - surface planed, rounded edges
- Type PK - surface planed, rounded edges with juice groove
- Type PKT - surface planed, rounded edges with juice groove and collection point

<b>ON</b>		<b>PN</b>	
<b>OK</b>		<b>PK</b>	
<b>OKT</b>		<b>PKT</b>	

## Standard colours:

natur, black, green



## Additional colours:

white, yellow, red



red/brown, grey, blue



pepper-salt, marble natur, marble black

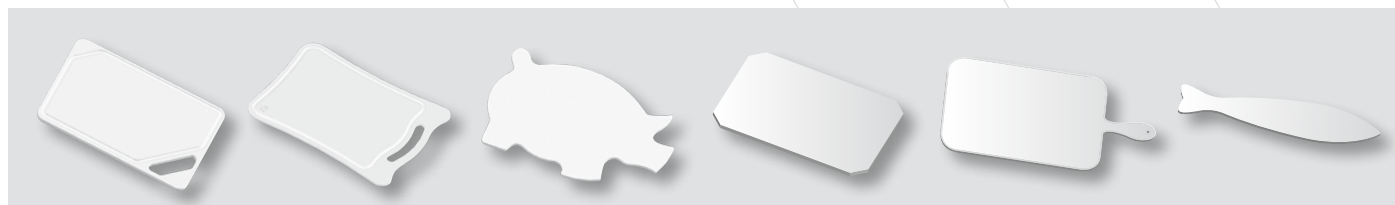


Other colours on special request.

## Standard dimensions:

- 15 x 300 x 500 mm
- 20 x 300 x 500 mm
- 30 x 300 x 500 mm
- 15 x 400 x 600 mm
- 20 x 400 x 600 mm
- 30 x 400 x 600 mm
- Other dimensions on request.

## KOTERM CUTTING BOARDS - SPECIAL DESIGN



**KDS.201**  
10x160x250mm

**KDS.202**  
10X221X311mm

**KDS.203**  
12X251X390mm

**KDS.125**  
20X395X595mm

**KDS.209**  
20X210X420mm

**KDS.234**  
15X195X610mm

### KOTERM ROLLING PIN



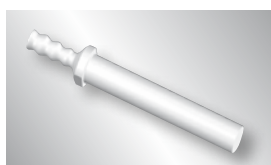
**VAL.70.300/D70X300mm**  
**VAL.70.400/D70X400mm**  
**VAL.90.300/D90X300mm**  
**VAL.90.400/D90X400mm**  
**VAL.90.500/D90X500mm**

### KOTERM SCRAPER



**SKOB.70.175/70X175mm**

### KOTERM PUSHER



**POT.42.100/D42X100X222mm**  
**POT.42.140/D42X140X262mm**  
**POT.50.300/D50X300X422mm**  
**POT.55.300/D55X300X422mm**

### KOTERM HAMMER



**KLA.60/D60X260mm**  
**KLA.80/D80X271mm**  
**KLA.100/D100X284mm**

### KOTERM LADLE



**KUH.15.500/15X70X500mm**  
**KUH.15.800/15X70X800mm**  
**KUH.1000/25X120X1000mm**  
**KUH.1200/25X120X1200mm**



## Isokon d.o.o.

Industrijska cesta 16  
3210 SLOVENSKE KONJICE  
SLOVENIJA

T: +386 (0)3 757 11 00  
F: +386 (0)3 757 10 63  
e-mail: sales@isokon.si

www.isokon.si  
www.funice.si  
www.isotrack.eu  
www.isotrack.in  
www.isokon-russia.ru

\* No reproduction of product photographs, drawings or images is permitted without the prior written approval of Isokon.

\* The information contained herein is based on current knowledge and does not guarantee properties or performance of the product under all conditions. Refer to Isokon Standard Terms and Conditions.