

**PARTNER IN
ALL INDUSTRY
FIELDS**



Member of *Constantia* Industries AG



ISOKON
INNOVATIVE PLASTICS SOLUTIONS

WHY ISOKON?

Great flexibility in meeting customers' demands, product performance and quality are the most important elements of our competitive advantage.

We offer innovative solutions, as well as produce and supply engineered polymeric materials, presented under the trademarks **KOTERM** and **ISOFORM** for all fields of the industry.



ABOUT US

We are a middle-sized Slovenian and European company with more than 40 years of experience in the field of technical plastics. We form part of the European chemical and rubber processing industry and are among the leaders in this sector. We are a subsidiary of ISOSPORT GmbH, from Eisenstadt, Austria and a

Member of *Constantia* Industries AG

Our headquarters are located in Slovenske Konjice, Slovenia.

SPECIALIST IN CUSTOM-TAILORED PRODUCTS

We offer innovative solutions in the field of thermoplastic production and processing. We help you solve complicated production or construction problems based on our extensive experience and exceptional know-how.

Wide range of opportunities

- Extruded, co-extruded and direct extruded compounded sheet
- Pressed sheet and press moulded designed sheet
- Production of machine components



ISOFORM EXTRUDED

- TAILOR-MADE materials for THERMOFORMING
- COMPOSITE MATERIAL - REINFORCEMENT WITH DIFFERENT FILLERS
- WOOD-PLASTIC COMPOSITES / BIO COMPOSITES
PE and PP filled with nano-cellulose fibres
- DESIGNED PRODUCTS :
FABAC, METAL DETECTABLE, ANTI-SLIP, ELECTRO CONDUCTIVE GRADES, HEAVY FILLED and others
- EMBOSSED SURFACES: N1, N2, N3, ALU or on request
- CO-EXTRUSION

Technologies

- Extrusion of sheets (thickness 0,5-25mm, max. width 1700 mm)
- Coextrusion (AB, ABA) of sheets (thickness from 1,2 mm, max. width 1500 mm)
- Extrusion of sheets with direct compounding (thickness 1 – 10 mm, max. width 1600 mm)

Lamination on extruded sheets with

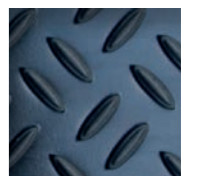
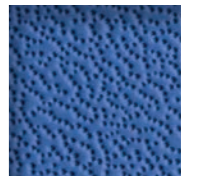
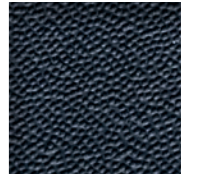
- Fleece
- Textile or fabric
- Foam
- Stripe(s)
- Decorative foil
- Logo-printed foil
- Protective foil

Surface finishing

- Glossy
- Mat
- Different textured structures with embossed rolls

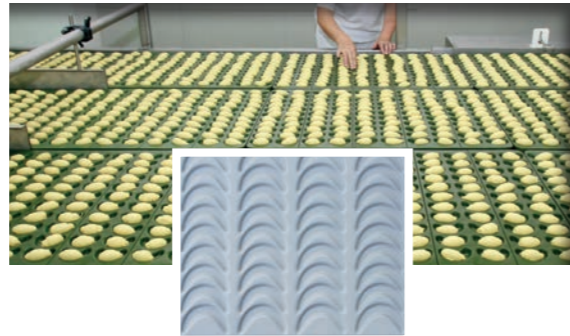
Others

- Surface activation with flame treatment
- "Cut to size" parts from extruded sheets



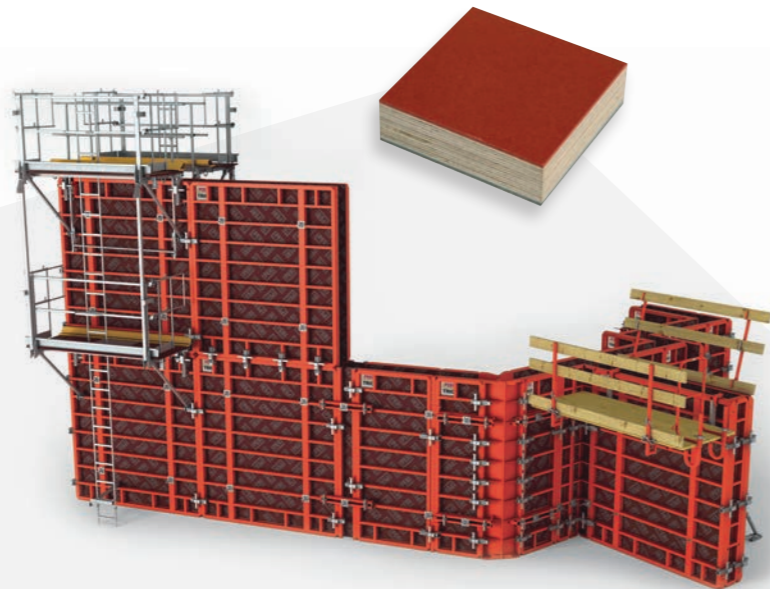
ISOFORM EXTRUDED

Recently done for customers...



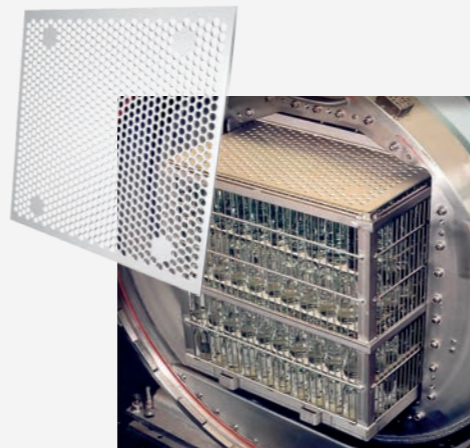
Wood-Plastic Composites

- Combine the best features of wood and plastics
- 100% recyclable and can be reground and reused after their service life
- Environment friendly material
- Stiff, strong and dimensionally stable material
- Low moisture absorption
- Thermoforming performance
- Used in building, furniture and automotive industry



Spacer mats for sterilization in autoclaves

- Cost/performance solution to substitute stainless steel mats
- High temperature resistance up to 135 °C
- Ready-made spacer mat according to the drawing
- Additional soft layer on both sides of spacer mat for the protection of sensitive packaging. For example soft glass jar caps, alternative to silicone.



Because of investments into technology and development, we are oriented into the application of modern materials and production technologies.

KOTERM PRESSED

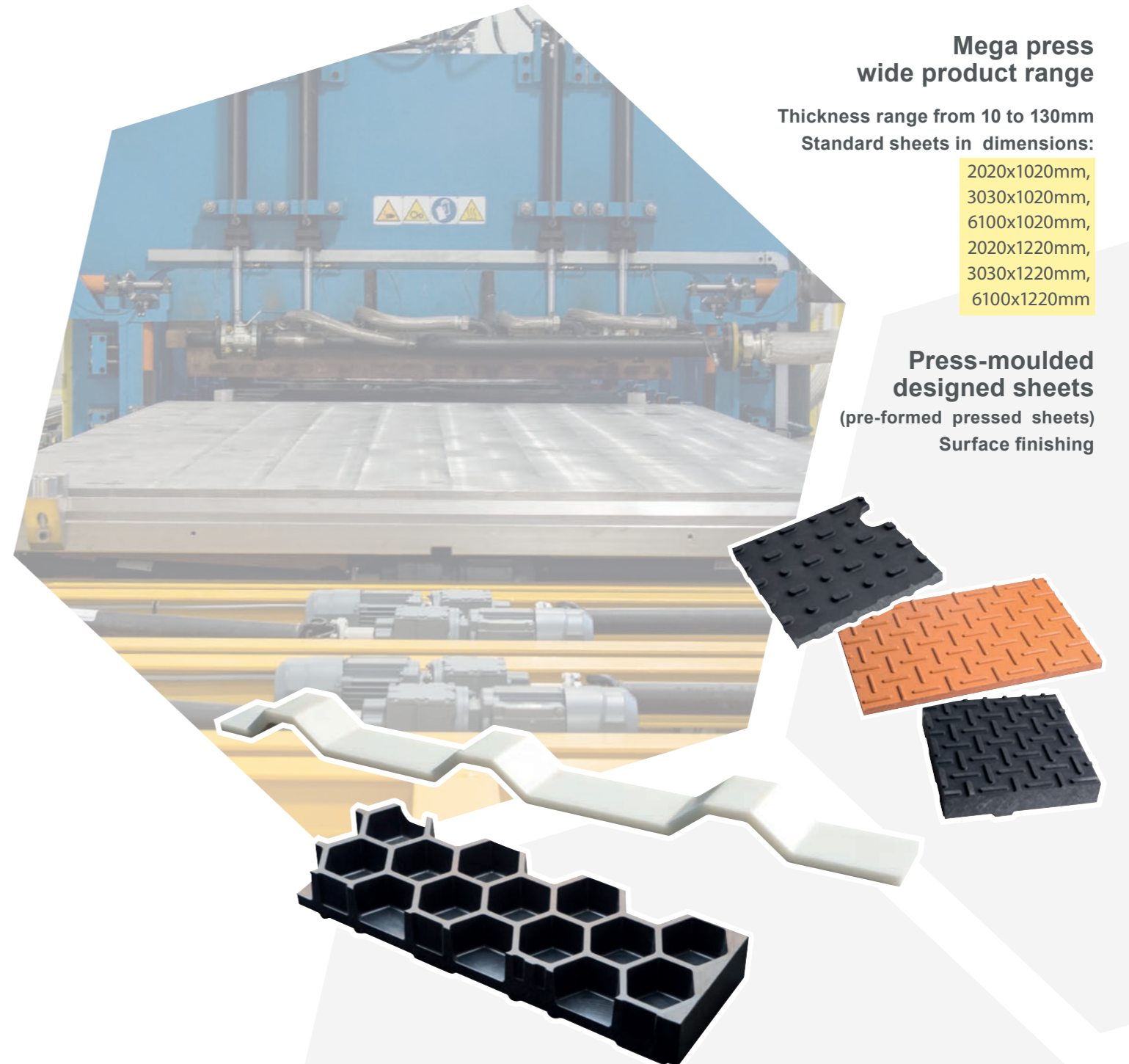
- MEGA PRESS WIDE PRODUCT RANGE
- PRESS-MOULDED DESIGNED SHEETS (PRE-FORMED PRESSED SHEETS)
- PROTOTYPING LARGE MACHINE COMPONENTS (big CNC machine)
- MATERIAL DESIGN fibre filled UHMW PE

Mega press wide product range

Thickness range from 10 to 130mm
Standard sheets in dimensions:

- 2020x1020mm,
- 3030x1020mm,
- 6100x1020mm,
- 2020x1220mm,
- 3030x1220mm,
- 6100x1220mm

Press-moulded designed sheets (pre-formed pressed sheets) Surface finishing

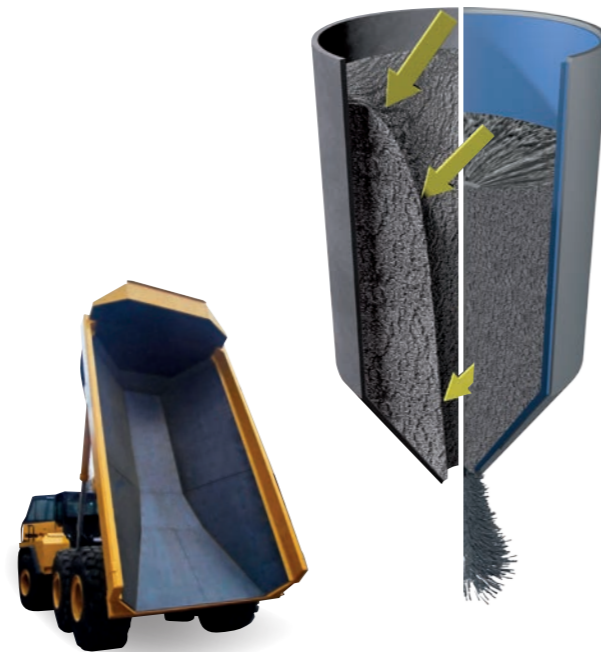


KOTERM PRESSED

Recently done for customers...

Rubber-backed material

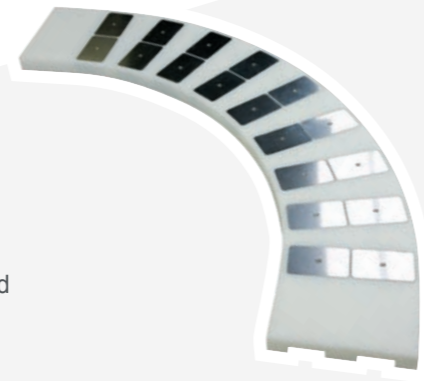
- Composed product from thin rubber and UHMWPE
- Rubber promotes adhesion to other materials using adhesives
- Noise and vibration absorption
- High wear and impact resistance
- Used in linings or elsewhere where mechanical fastening is limited



Self-lubricated material

Oil filled UHMWs host of exceptional attributes such as:

- Composed product from thin rubber and UHMWPE
- Rubber promotes adhesion to other materials using adhesives
- Noise and vibration absorption
- High wear and impact resistance
- Used in linings or elsewhere where mechanical fastening is limited

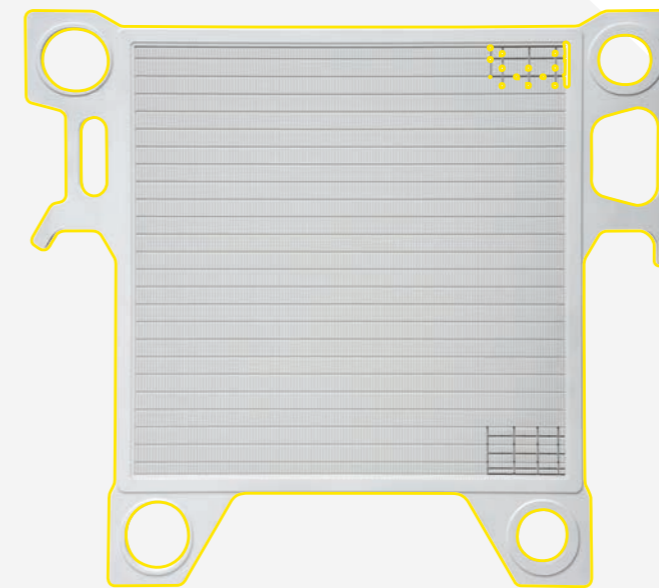


Prototyping and serial production large machine components



KOTERM PRESSED

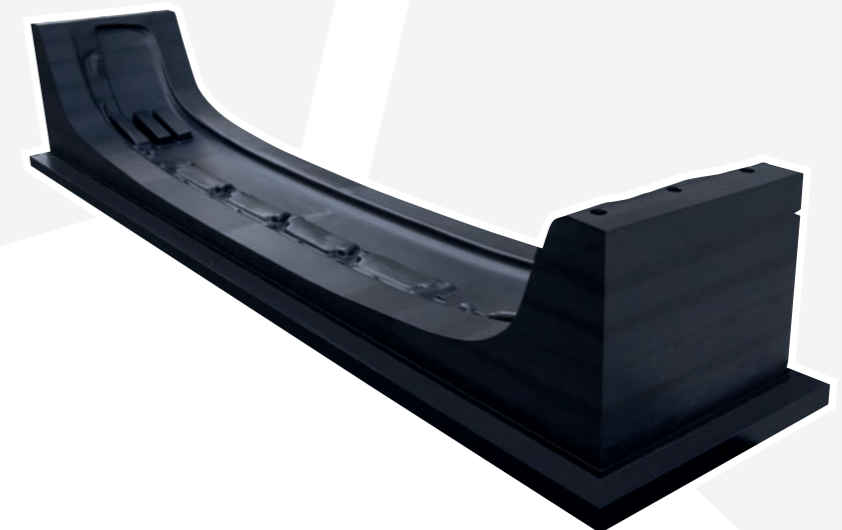
Mechanical engineering elements are products that are, in most cases, produced according to the customer's drawings and specifications, or as autonomous technical solutions that are developed and technologically included in the customer's projects. Based on extensive experience and know-how, Isokon provides a quick solution for the customer.



Machining capabilities:

- Milling
- Turning
- Profiling
- Cutting

CNC machines with working table width: from 600 mm to 2400 mm length: from 1000 mm to 5600 mm



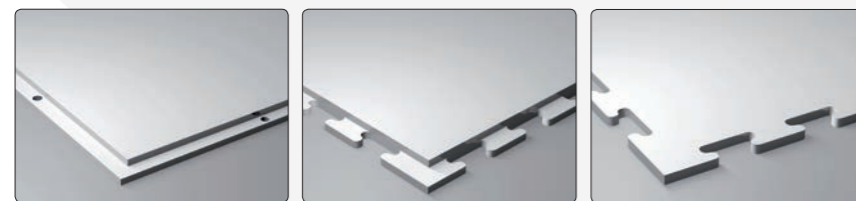
KOTERM FUNICE

Ice skating panels and Dasherboards



Dasher boards

Can be used for ice rings or any other rings which has to be protected by a fence.



L-System

Puzzle System

ePuzzle System

More than 50,000m² of our panels have been successfully installed.

We are especially proud of the excellent gliding properties of our Premium-Generation, which has the best gliding properties of all synthetic ice panels available on the market.

We are involved in joint technological development projects with customers. With innovations, continuous and sustainable development, and by solving questions and problems, we build a long-term relationship with our customers.



JOINT DEVELOPMENT PROJECTS WITH CLIENTS

Example Grüter

- Sensory fields and computer software allow better training results in Bad Aibling

We manufactured an ice skating rink with markings for our customer. The ice skating rink is used by hockey players for training; under the square markings there are built-in pressure sensors which help ice skaters with their training as they have to visually follow the path on the display, and shortens the time needed to get to the designated sites.

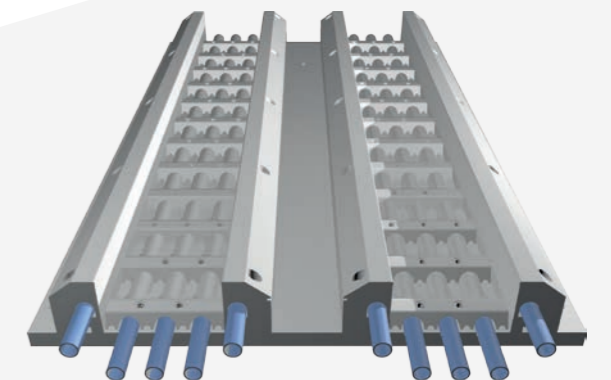
- Bobsleigh platform in Winterberg

We renovate the finish area of the bobsleigh stop where bobsleigh is pushed towards the weighing station. The right choice of material allowed nice slippery surface and lower operating costs. We selected FunICE material, which we previously used for pilot testing in August 2013 to cover approx. 380m² of the concrete surface of irregular shapes. Good cooperation with clients has led to innovations, further development and final production of covering part of bobsleigh tracks with plastic.

Example Mana Original

- Winter / Summer ski-jump ramp

Together with Slovenian partner, manufacturer of run-up tracks for ski jumping, we developed a PE ski-jump surface, made out of KOTERM. It has already been installed into many ski jumps worldwide. Homogeneous material is much less sensitive to temperature changes in comparison to combination of different materials. Modular composite ski-jump surfaces offers quick and effective replacement of any component of the surface. This is what put our partner in front of the competition.





ISOKON
INNOVATIVE PLASTICS SOLUTIONS

ISOKON d.o.o.

proizvodnja in predelava termoplastov, d.o.o.,
Slovenske Konjice
MESTNI TRG 5A
3210 SLOVENSKE KONJICE
SLOVENIJA

T: +386 (0)3 757 11 00
F: +386 (0)3 757 10 63
e-mail: sales@isokon.si
www.isokon.si
www.funice.si

