

ISOTRACK X SERIES
PROTECT – BE SAFE

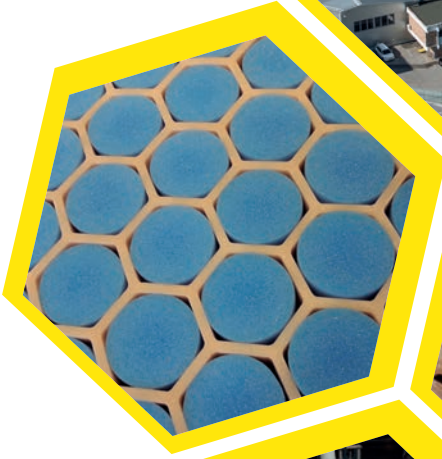
HEAVY DUTY TEMPORARY ACCESS AND GROUND PROTECTION MAT

FOR SAFE, TEMPORARY
ACCESS ACROSS
SOFT GROUND AND IN
EXTREME WET WEATHER
CONDITIONS, ISOTRACK X
SERIES IS THE ULTIMATE
EXTREME HEAVY DUTY
ROAD MAT



ISOKON
INNOVATIVE PLASTICS SOLUTIONS

ABOUT US



We are a mid-sized Slovenian and European company with more than 40 years experience in the field of technical plastics.

We have factory plant and equipment that has been dedicated to making extreme duty temporary road access mats for more than 8-years.

Our own R & D team in partnership with Universities in Ljubljana and Maribor provides design innovation and robust testing to ensure mat performance.

KEY FEATURES

- Outstanding compressive strength - more than 415 tonnes/m² reaching max force 730 tonnes/m²
- Each mat has two excellent traction surfaces
- Surface traction design for safe movement of vehicles
- Foam filled core prevents water ingress if mat is punctured (no cross contamination and no additional weight)

KEY BENEFITS

- Compression moulded high performance thermoplastic material
- Robust, durable, high performance mat
- Overlap lip for interlocking mats to make roadways or working pads
- Patented Four3 connector pin system
- Cellular core construction provides buoyancy in water-logged areas
- Highly efficient weight dispersal across a wide range of ground conditions
- Reduce dust pollution on dry soils
- Protect sensitive habitats
- Protect ground from pedestrian traffic
- Easy and durable connection system
- Customer logo option
- Long life and recyclable at end of life



APPLICATIONS-MAIN SECTORS

- Oil and gas
- Utilities
- Construction
- Petrochemical
- Transmission
- Temporary helipads
- Wind farms
- Pipelines
- Quarries and mining
- Commercial timber and woodlands operations
- Any project requiring safe temporary access for heavy vehicles and equipment



SAFETY AND EFFICIENCY

Engineered for performance and strength, the interlocking mats distribute weight across a large surface area while remaining stable and strong through all operating conditions. The surface tread improves traction and safety for load-bearing vehicles, while the patented Four3 connection system reduces mat drift and slippage. The mats provide years of reusable performance with proper use and maintenance.

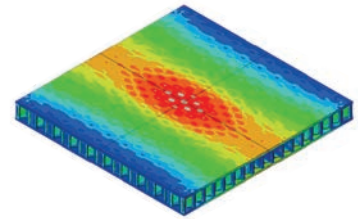
General information	
Overall Area	4000 x 2000 mm
Height	Total 102 mm, Core 94 mm
Useable Surface Area	1,8 x 3,8 m = 6.84 m ²
Weight	360kg
Colour	Sand (standard), other colours optional
Logistic	Standard high cube 40 feet container 50 mats, Truck standard EU 60 mats
Handling	Designed for end users, 2-sided mat; for different type of vehicles
Recycling	100% recyclable
Safety	Nub structure prevents slips, trips, falls
Environmental	No liquid absorption, chemically inert, allows easy decontamination-cleaning
Compressive load capacity: 605 psi*	415 tonnes m ²
Load bearing capacity	In excess of 200t*
Fire Rating	UL 94HB

*Load capacity is dependent on ground conditions

ANALYSIS AND TESTING OF ISOTRACK X MATS

FEA Analyses

Faculty of Mechanical Engineering Maribor Slovenia



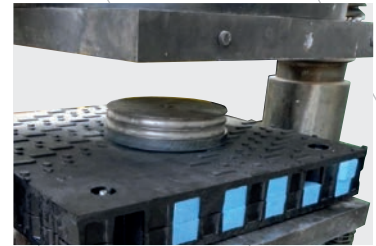
3 POINT LOAD TESTS

Faculty of Civil and Geodetic Engineering/ University of Maribor



COMPRESSION TEST

Faculty of Civil and Geodetic Engineering/ University of Ljubljana



CYCLIC DEFLECTION TEST

Faculty of Civil and Geodetic Engineering/ University of Ljubljana: **100.000 cycles no break**



LOW TEMPERATURE TEST AT -40 DEGREES

IABG Munich-Germany **NO BREAK**



BENDING TESTS AT AMBIENT TEMPERATURE **NO BREAK**



ISOKON d.o.o.

proizvodnja in predelava termoplastov, d.o.o.,
Slovenske Konjice
MESTNI TRG 5A
3210 SLOVENSKE KONJICE
SLOVENIJA

T: +386 (0)3 757 11 00
F: +386 (0)3 757 10 63
e-mail: isotrack@isokon.si
www.isotrack.eu
www.isokon.si

No reproduction of mat photographs, drawings or images is permitted without the prior written approval of Isokon. The information contained herein is based on current knowledge and does not guarantee properties or performance of IsoTrack X under all conditions. Refer to Isokon Standard Terms and Conditions. The mat is made from material with high compressive strength but the maximum safe vehicle weight will depend on a number of factors including the load bearing capacity of the underlying ground conditions. Advice should be sought from competent project geotechnical engineers.