

Machine components

The company Isokon carries out orders with the most state-of-the-art CAD-CAM systems and modern computerized machinery for processing of thermoplastics.

Material: KOTERM PE1000

Properties:

- Excellent wear and abrasion resistance
- Very low coefficient of friction
- Self-lubrication
- No moisture absorption

Other suitable materials: Regenerated KOTERM PE1000

Standard colours:

natural, black, green



Additional offer:

aqua blue, green-yellow, purple



Other colours may be custom-ordered..

Material: KOTERM PE500

Properties:

- Physiological integrity (according to the FDA Standard)
- High resistance to incision and friction
- High chemical and corrosion resistance
- Good impact strength

Other suitable materials: Regenerated KOTERM PE500

Standard colours:

natural, black, green

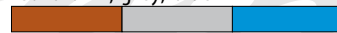


Additional offer:

White, yellow, red



red-brown, grey, blue



pepper-salt, natural marble, black marble



Other colours may be custom-ordered..

Material: KOTERM PPH

Properties:

- High chemical and corrosion resistance
- Good welding capacity
- Very good specific electrical resistance and dielectric strength
- Physiological integrity

Standard colours:

natural, grey



Other colours may be custom-ordered..

Special materials:

KOTERM FREX (PE-UHMW + additives)

colour: dark grey

properties: self-extinguishable, antistatic



KOTERM OIL FILLED (PE UHMW + additives)

Colour: natural, black, green

Properties: improved sliding characteristics



KOTERM MoS₂ (PE UHMW + additives)

Colour: black

Properties: improved sliding characteristics



KOTERM DS (PE UHMW + additives)

Colour: black

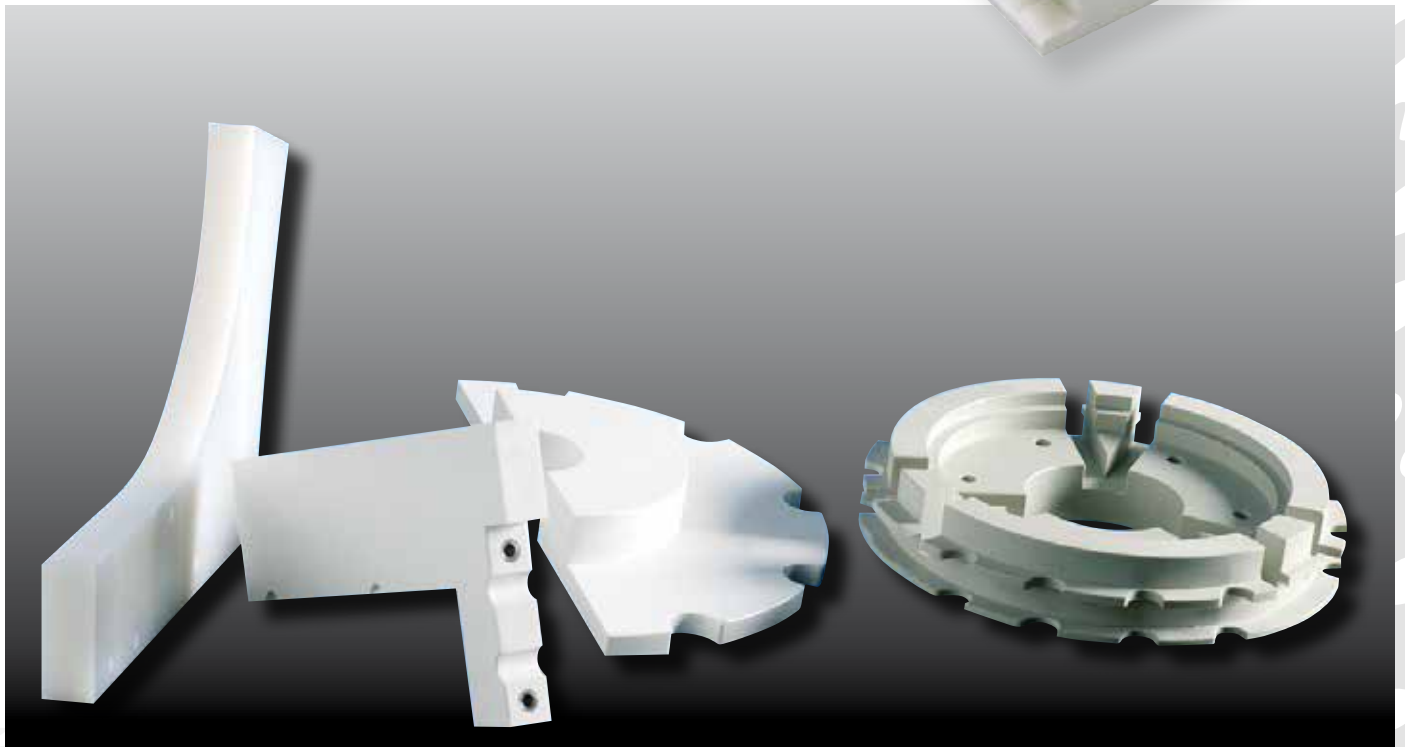
properties: dry sliding, increased wear resistance



KOTERM SUPER HOT (PE UHMW + additives)

Colour: natural

properties: enhanced heat distortion resistance



Other materials:

PA, POM, PET, PVDF, PTFE

Manufacturing possibilities:

standard panel dimensions: thickness of 10mm up to 130mm, widths of 1,020mm and 1,220mm, and lengths of 2,020mm 3,030mm and 6,100mm

Machinery

- milling machines
- profiling machines
- lathing machines
- other

Milling machines



CMS Avant 6285
processor machine with 5 axes

Working table: 5600x2450x750mm
Max. rpm: 24000 rpm



HURCO VMX30 processor machine
with 3 axes

Working table: 1,067 × 609 × 609mm
Max. rpm: 10,000rpm



Vector processor machine
CMS NC PF 111 with 3 axes

Working table: 2650x1240x280mm
Max. rpm: 18000 rpm



SCM Record 220 processor machine with 3 axles

Working table: 3200x1250x320mm
Max. rpm: 18000 rpm



MAKA CR 27 T processor machine with 5 axles

Working table: 1500x1500x420mm
Max. rpm: 10000 rpm



Profiling machines

Weinig unimat 1000 wood processor machine

