

## CHAMBER FILTER PLATES

ISOKON produces chamber filter plates for filtration equipments in accordance to DIN standards, or as special designs made out of carefully selected materials (high-temperature stabilised homopropylene) pressed under high pressure. ISOKON chamber filter plates are successfully used world-wide due high quality standard.

### AREAS OF USE:

- **Mining and daily surface mining**  
Coal, marble, china clay, ceramics
- **Ecology** – environmental protection  
Municipal water and sewage, refinery waste, galvanic wastes and wastes from metal processing
- **Manufacture of colours and pigments**  
Chemical intermediary products and solution purification processes
- **Food processing industry**  
Production of various concentrates; sugar, yeast, edible oils, juices, wine

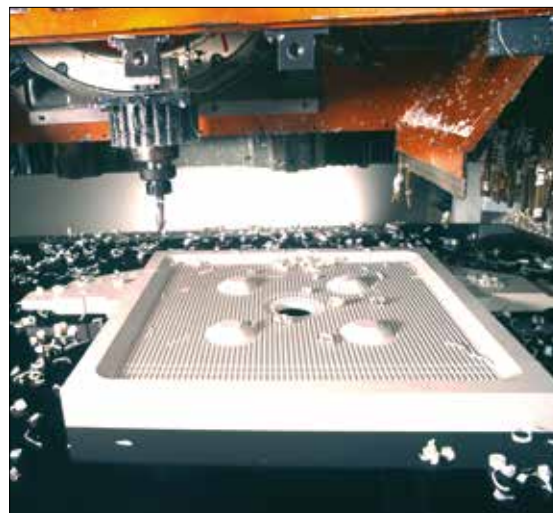
### ADVANTAGES:

- Long life time
- Product quality
- Excellent sealing
- Easy cleaning
- Light weight
- Special sizes up to 2500 x 2000mm according to customer requirements



## ISOKON PRODUCTION FACILITIES:

CNC Milling Machinery for highest precision  
in mechanical treatment of large or small  
series for plates up to 2500 x 2000 mm



### PROGRAM CHAMBER FILTER PLATES:

- Standard filter plates up to 1000\*1000
- Custom filter plates up to 2500\*2000
- Prototypes
- Accessories for filter plates (handle's, flanges, pipes...)



**KOTERM** PRESSED



## CMS AVANT 6285 PROCESSOR MACHINE WITH 5 AXLES

Working table: 5600x2450x750mm

Max. rpm: 24000 rpm

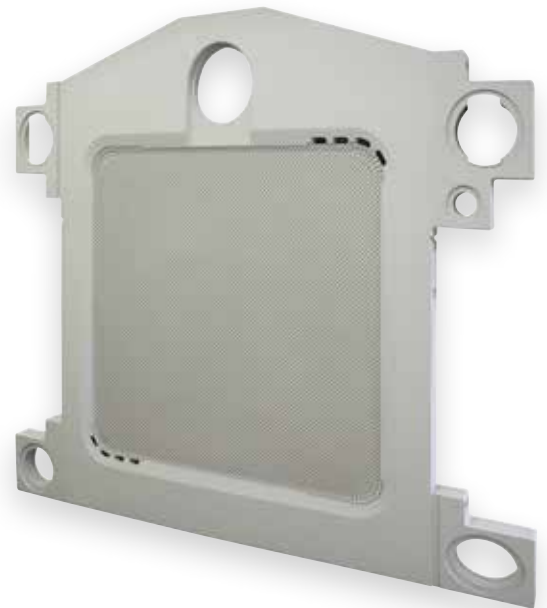
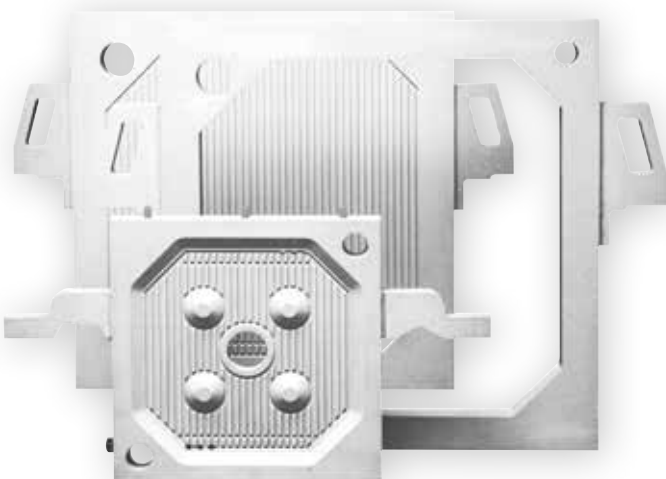
## KOTERM PPH

### PP- Homopolymer

	TEST METHOD	UNIT	
Density	ISO 1183	g/cm <sup>3</sup>	0,92
Tensile strength	ISO 527-1	N/mm <sup>2</sup>	30
Tensile strength at break	ISO 527-1	N/mm <sup>2</sup>	-
Elongation at break	ISO 527-1	%	> 50
Modulus of elasticity	ISO 527-1	N/mm <sup>2</sup>	1300
Impact strength (CHARPY)	ISO 179	mJ/mm <sup>2</sup>	No Break
Notched impact strength (CHARPY)	ISO 179	mJ/mm <sup>2</sup>	6
Impact strength with 15° V-notch	ISO 179	mJ/mm <sup>2</sup>	-
Ball-thrust hardness 30 sec.	ISO 2039	-	67
Shore hardness D	ISO 868	-	70
Wear resistance	SAND - SLURRY	-	-
Crystalline grain melting range	DIN 53736	°C	~ 165
Thermal conductivity	DIN 52612	W/m*K	0,22
Coefficient off linear expansion	DIN 53752	K <sup>-1</sup>	1,5*10 <sup>-4</sup>
Vicat softening temperature VSP/a/50	ISO 306	°C	-
Vicat softening temperature VSP/b/50	ISO 306	°C	88
Volume resistance	DIN VDE 0303	Ω*cm	>10 <sup>15</sup>
Surface resistance	DIN VDE 0303	Ω	>10 <sup>15</sup>
Dielectric strenght	DIN VDE 0303	kV/mm	50
Dielectric loss factor 106 Hz	IEC 250	-	2*10 <sup>-4</sup>
Dynamic coefficient of friction			0,09 - 0,17

## Standard filter plates

Format	Cake thickness	Filter pressure 8 bar		Filter pressure 16 bar		Filter area	Filter volume
		Thickness	Weight	Thickness	Weight		
mm	mm	mm	kg	mm	kg	dm <sup>2</sup>	dm <sup>2</sup>
250x250	20	35	1,2	40	1,5	9,6	0,9
	25	40	1,3	45	1,6	10,4	1,1
	30	45	1,5	50	1,8	11	1,4
400x400	20	38	3,1	43	3,9	24,6	2,3
	25	43	3,4	48	4,2	25,8	2,9
	30	48	3,7	53	4,4	26,4	3,6
470x470	20	38	4,2	43	5,2	34,4	3,3
	25	43	4,6	48	5,6	36	4,1
	30	48	5,1	53	6,1	37,8	5,1
500x500	20	38	4,9	43	6	37,8	3,6
	25	43	5,4	48	6,6	39,6	4,5
	30	48	5,9	53	7,1	41,6	5,6
630x630	20	40	8,2	45	10	61,8	5,9
	25	45	8,9	50	10,7	64,4	7,6
	30	50	9,6	55	11,4	67	9,3
800x800	20	45	15,6	50	18,6	102,8	10,1
	25	50	16,3	55	19,2	106,2	12,8
	30	55	17,4	60	20,3	109,8	15,6
1000x1000	20	48	26,5	53	31	162	16,2
	25	53	27,3	58	31,9	166,5	20,5
	30	58	28,7	63	32	170,5	24,6



### Isokon d.o.o.

Industrijska cesta 16  
3210 SLOVENSKE KONJICE  
SLOVENIJA

T: +386 (0)3 757 11 00  
F: +386 (0)3 757 10 63  
e-mail: sales@isokon.si

www.isokon.si  
www.funice.si  
www.isotrack.eu  
www.isotrack.in  
www.isokon-russia.ru

- \* No reproduction of product photographs, drawings or images is permitted without the prior written approval of Isokon.
- \* The information contained herein is based on current knowledge and does not guarantee properties or performance of the product under all conditions. Refer to Isokon Standard Terms and Conditions.