

ISOTRACK
PROTECT – BE SAFE

TEMPORARY ACCESS AND GROUND PROTECTION MAT



MEMBER OF *Constantia* INDUSTRIES



ISOKON
INNOVATIVE PLASTICS SOLUTIONS

CONTENTS

- 4 **Isotrack X Series**
 - 5 Key Benefits, Key information and features
 - 6 Applications-main sectors
 - 7 Safety and Performance, General information
- 8 **Isotrack H Series**
 - 9 Key Benefits, Key information and features
 - 10 Applications-main sectors
- 11 **Isotrack H Overlap**
 - Key information and features, General information
- 12 **Isotrack M**
 - Key information and features, General information
- 13 **Isotrack T MAT**
 - Application-main sectors, Key Benefits,
Key information and features
 - 14 Safety and Performance, General information
- 17 **Isotrack L Series**
 - 18 Key Benefits, Key information and features
Applications-main sectors
 - 19 Safety and Performance, General information



ABOUT ISOKON

We have factory plant and equipment that has been dedicated to making premium quality temporary road access mats since 2009. Our own technical R & D team works in partnership with independent institutions to provide design innovation and robust testing to ensure mat performance and durability.



HEAVY DUTY TEMPORARY ACCESS AND GROUND PROTECTION MAT

For safe, temporary access across soft ground and in extreme wet weather conditions, Isotrack X series is the ultimate extreme heavy duty road mat





KEY BENEFITS

- Outstanding compressive strength - more than 415 tonnes/m² reaching max force 730 tonnes/m²
- Each mat has two different traction surfaces - for tyres and steel tracks
- Market leading surface Isotraction™ design for safe vehicle operation
- Foam filled core prevents water ingress if mat is punctured (no cross contamination and no additional weight)

KEY INFORMATION AND FEATURES

- Compression moulded high performance thermoplastic material
- Robust, durable, high-performance mat
- Overlap design for interlocking mats to make roadways, work pads, parking and turning areas
- Fast Four3 connector pin system
- Cellular core construction provides good mat rigidity and load distribution
- Stability and support for vehicles and equipment across a wide range of ground conditions
- Reduce dust pollution on dry soils
- Protect sensitive habitats
- Customer logo option
- Long life and recyclable at end of life
- Accessories include turning pieces and on/off ramp

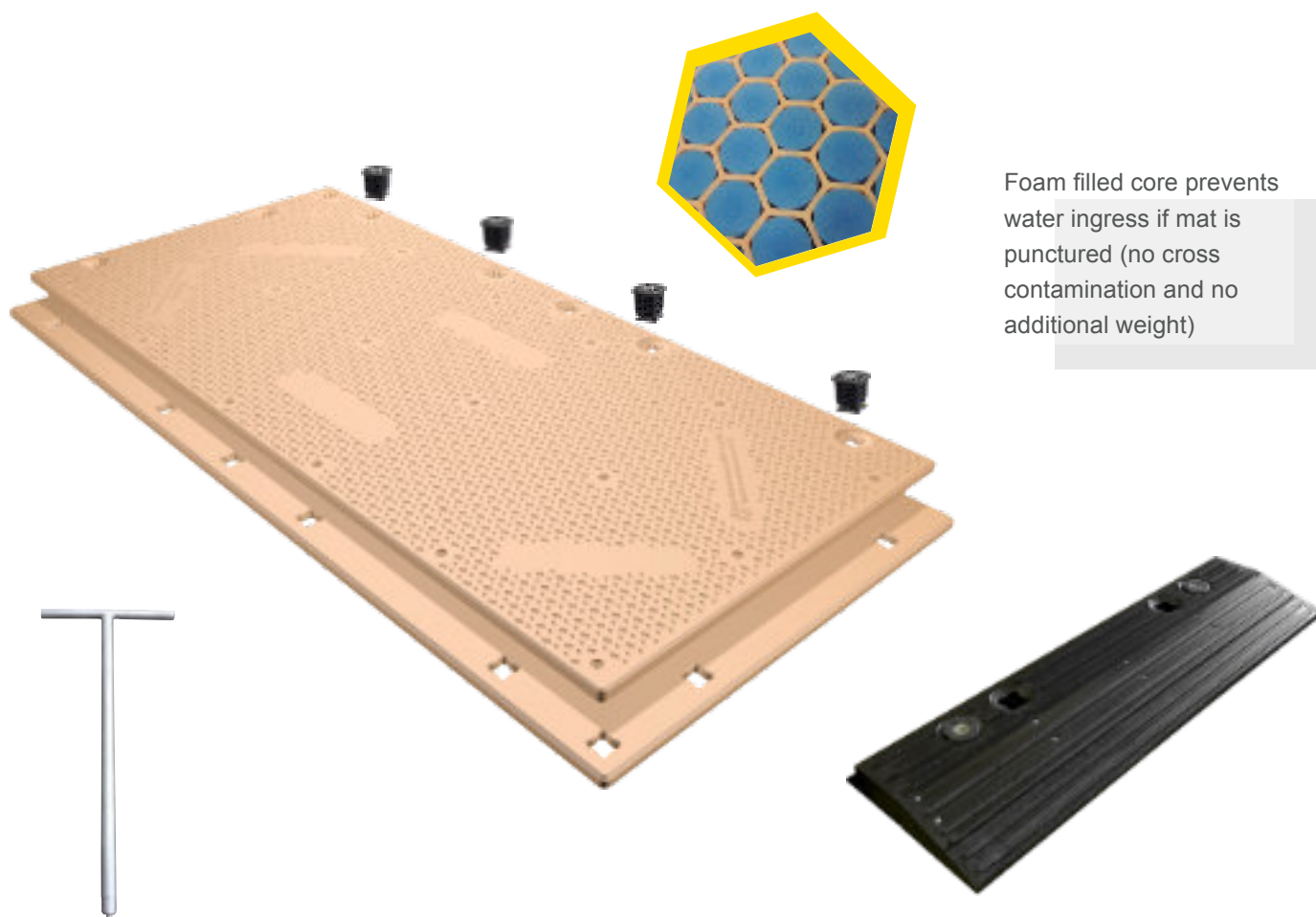
APPLICATIONS-MAIN SECTORS

- Construction and civil engineering
- Utilities
- Oil and gas
- Petrochemical
- Transmission
- Windfarms / renewable energy projects
- Drilling contractors
- Pipelines
- Quarries and mining
- Commercial timber and woodland operations
- Events
- Any project requiring safe temporary access and work areas for heavy vehicles and equipment



SAFETY AND PERFORMANCE

Engineered for performance and strength, the interlocking overlap mats distribute weight across a large surface area while remaining stable and strong through all operating conditions. The Isotraction™ surface tread improves traction and safety for load-bearing vehicles, while the patented Four3 connection system reduces mat drift and slippage. The mats provide years of reusable performance with proper use and maintenance.



General information			
Overall Dimensions	4000 x 2000 mm	Safety	Surface structure designs provide excellent traction for vehicles
Thickness	Total 102 mm, Core 94 mm	Environmental	No liquid absorption, chemically inert, allows easy decontamination-cleaning
Overlap	200 mm	Compressive load capacity	Can withstand 415 t/m ² (605 psi) without deformation or breakage
Useable Surface Area	1,8 x 3,8 m = 6.84 m ²	Load bearing capacity	In excess of 200t*
Weight	360kg	Operating Temperature Range	- 40°C to + 80°C
Colour	Sand (standard), other colours subject to minimum order quantity	Fire Rating	UL 94HB
Transport	Standard high cube 40 feet container 52 mats, Mega Truck standard EU 60 mats	AST additive	Tested according to DIN standard IEC EN 62631-3-2:2016
Handling and Installation	Easily handled and installed using different types of equipment	RFID or GPS Tags	Option to install your tag of choice within weather proof pocket.
Recycling	100% recyclable		

* Load bearing capacity is dependent on ground conditions.

ISOTRACK H SERIES

PROTECT – BE SAFE

HEAVY DUTY TEMPORARY ACCESS AND GROUND PROTECTION MAT

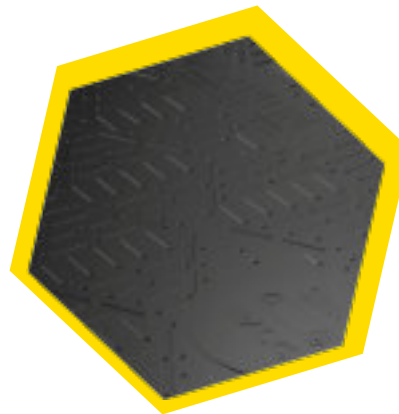
Isotrack H series heavy duty road mats provide safe, temporary access work areas and protection over soft ground conditions and hard surfaces.

Wide range of project applications. Easy to install.



SAFETY AND PERFORMANCE

- Isotraction™ surface designed is based on tyre manufacturer traction research and has been independently tested to demonstrate superior grip for vehicles compared to other mats.
- Prevent vehicles and workers getting bogged down – avoid costs associated with project delays.
- Avoid ground reinstatement costs.
- Cannot puncture and take on water or contaminants.
- Easy to clean after use.



Steel traction surface



General information			
Overall Dimensions	3000 x 2500 mm	Handling and Installation	Mat incorporates lifting points. Can use lifting hooks, slings, eye bolts, forklifts or vacuum lifting equipment
Thickness	Total 46 mm, Core 38 mm	Connection	Using standard M16 bolts with steel or flexible straps. Steel reinforced connection points.
Useable Surface Area	7,5 m ²	Recycling	100% recyclable
Weight	295 kg	Safety	Surface structure designs provide excellent traction for vehicles
Material	Recycled HDPE	Environmental	No liquid absorption and chemically inert. Easy to clean/decontaminate
Colour	Black (standard), other colours optional subject to minimum order quantity	Load bearing capacity	Ideal for supporting vehicles and equipment up to 150 tonnes*
Transport	Open top standard high cube 40' container 66 mats, Mega Truck standard EU 75 mats	Fire Rating	UL 94HB

* Load bearing capacity is dependent on ground conditions.



KEY BENEFITS

- Fast and easy to install using standard M16 bolts
- Install roadways, working pads, parking and turning areas
- Safe movement and access for vehicles, equipment and people
- Mats gently flex with ground contours – no ground preparation required
- Prevent severe rutting and damage – protect sensitive habitats and avoid ground reinstatement costs
- Prevent vehicles and equipment from getting bogged down - keep your project running and avoid delays
- Flexible but tough and durable mat for long life use
- Customer logo option
- Low theft risk compared to aluminium and steel mats
- Long life and 100% recyclable at end of life

KEY INFORMATION AND FEATURES

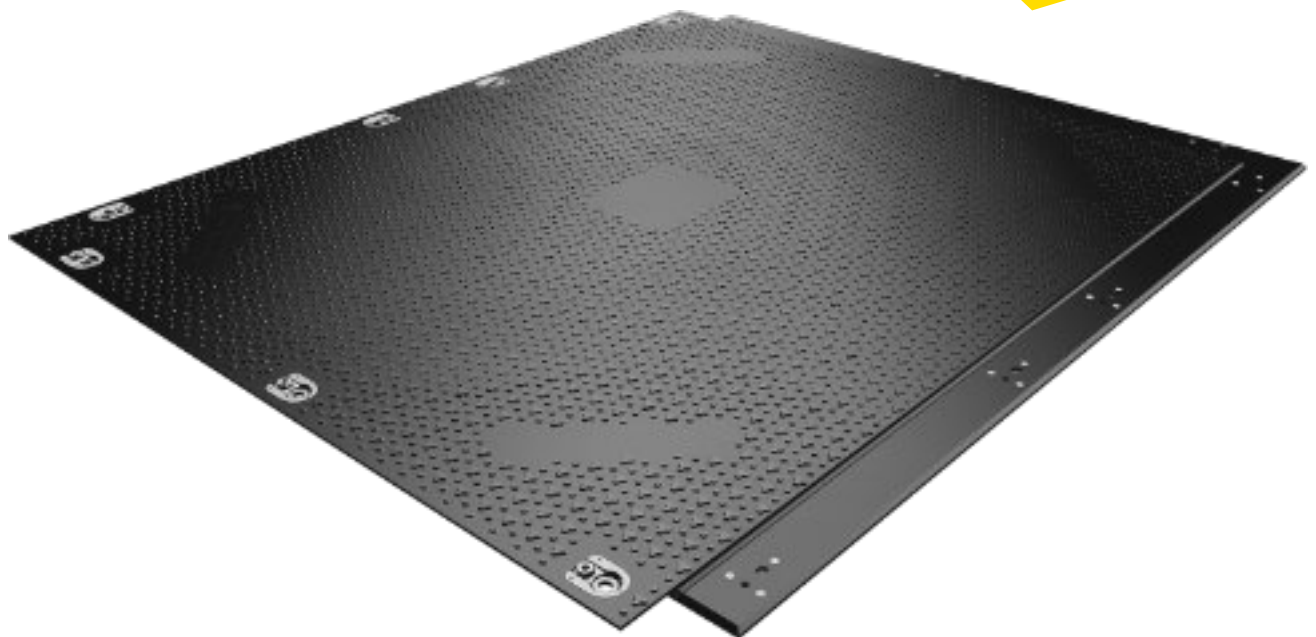
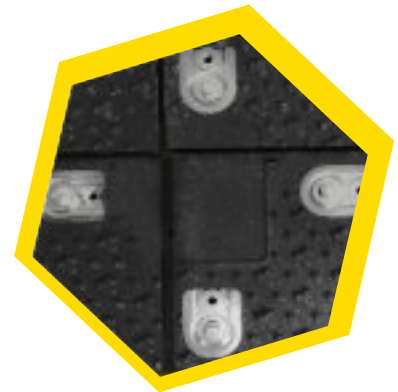
- One piece compression-moulded, high-performance recycled thermoplastic material resistant to chemicals and oil and is UV protected
- Each mat has two different, excellent traction surfaces for safe movement of vehicles in dry or wet conditions.
- One surface has the market leading Isotraction™ design for safe vehicle operation and the second surface is designed for steel tracked equipment operation.
- Steel-reinforced lifting points

ISOTRACK H OVERLAP

PROTECT – BE SAFE

KEY INFORMATION AND FEATURES

- Heavy duty application
 - Overlap system ensures good load transfer across mats
 - Reversible mat each side having a different traction surface
 - Both brickwork (offset) and orthogonal assembly options possible
 - Unique Exchangeable nut Metal Connectors
- All metal parts are recessed below useful surface
Integrated connectors can be used from either side
using standard M16 bolts



General information			
Handling and Installation	Vacuum lifting equipment recommended, Forklift	Overall Dimensions	3000 x 2500 mm
Connection	Standard M16 bolts, Metal Connectors are integrated in the plate	Thickness	Total 46 mm, Core 38 mm
Recycling	100% recyclable	Useable Surface Area	6,5 m ²
Safety	Surface structure designs provide excellent traction for vehicles	Weight	265 kg
Environmental	No liquid absorption and chemically inert. Easy to clean/decontaminate	Material	Recycled HDPE
Load bearing capacity	Ideal for supporting vehicles and equipment up to 150 tonnes*	Colour	Black (standard), other colours optional subject to minimum order quantity
Fire Rating	UL 94HB	Transport	Mega Truck standard EU 84 mats Open top standard high cube 40' container 66 mats

* Load bearing capacity is dependent on ground conditions.

KEY INFORMATION AND FEATURES

- Lightweight /manhandable
- Heavy duty application
- Overlap system ensures good load transfer across mats
- Reduced risk of mud pushing up onto mat surface (overlap mat)
- Both brickwork (offset) and orthogonal assembly options possible
- Robust metal connection design
- Connection from both sides using standard M12 bolts



General information			
Handling and Installation	Two-person lift, no specialist tools or equipment required	Overall Dimensions	1906 x 1000
Connection	Standard M12 bolts, metal connectors are integrated in the plate	Thickness	Total 33 mm, Core 25 mm
		Useable Surface Area	1,63 m²
Recycling	100% recyclable	Weight	43 +/- 1 kg
Safety	Surface structure designs provide excellent traction for vehicles	Material	Recycled HDPE
Environmental	No liquid absorption and chemically inert. Easy to clean/decontaminate	Colour	Black (standard), other colours optional subject to minimum order quantity
Load bearing capacity	Ideal for supporting vehicles and equipment up to 130 tonnes*	Transport	Open top standard high cube 40' container 440 mats, Mega Truck standard EU 540 mats
Fire Rating	UL 94HB		

* Load bearing capacity is dependent on ground conditions.



APPLICATIONS-MAIN SECTORS

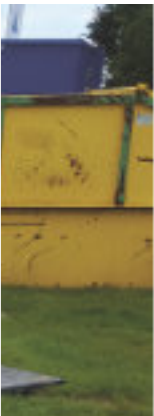
- Construction and civil engineering
- Utilities
- Oil and gas
- Petrochemical
- Transmission
- Windfarms / renewable energy projects
- Drilling contractors
- Pipelines
- Quarries and mining
- Commercial timber and woodland operations
- Events
- Any project requiring safe temporary access and work areas for heavy vehicles and equipment





HEAVY DUTY TEMPORARY ACCESS AND GROUND PROTECTION MAT

Easy to install heavy duty road mat. Wide range of project applications. Provides safe, temporary access, work areas and protection over soft ground conditions and hard surfaces.



APPLICATIONS-MAIN SECTORS

- Construction and civil engineering
- Utilities
- Oil and gas
- Petrochemical
- Transmission
- Windfarms / renewable energy projects
- Drilling contractors
- Pipelines
- Quarries and mining
- Commercial timber and woodland operations
- Events
- Any project requiring safe temporary access and work areas for heavy vehicles and equipment



KEY BENEFITS

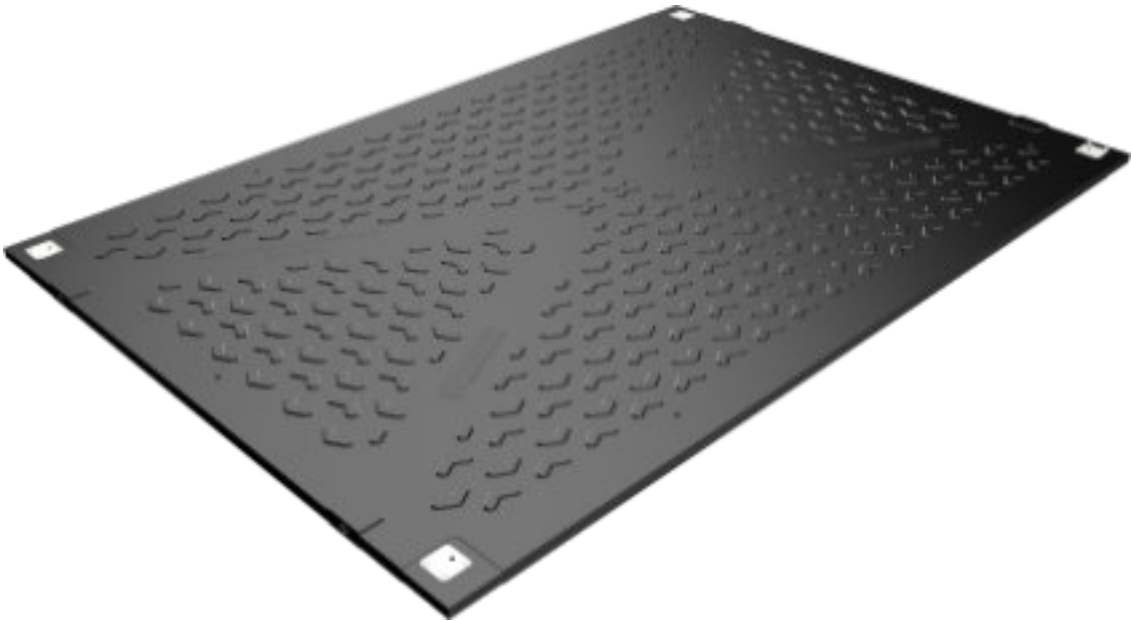
- Fast and easy to install using standard M16 bolts
- Install roadways, working pads, parking and turning areas
- Safe movement and access for vehicles, equipment and people
- Mats gently flex with ground contours – no ground preparation required
- Prevent severe rutting and damage – protect sensitive habitats and avoid ground reinstatement costs
- Prevent vehicles and equipment from getting bogged down - keep your project running and avoid delays
- Flexible but tough and durable mat for long life use
- Customer logo option
- Low theft risk compared to aluminium and steel mats
- Long life and 100% recyclable at end of life

KEY INFORMATION AND FEATURES

- One piece compression-moulded, high-performance recycled thermoplastic material resistant to chemicals and oil and is UV protected
- Each mat has two different, excellent traction surfaces for safe movement of vehicles in dry or wet conditions.
- Steel-reinforced lifting points

SAFETY AND PERFORMANCE

- Prevent vehicles and workers getting bogged down – avoid costs associated with project delays.
- Avoid ground reinstatement costs.
- Cannot puncture and take on water or contaminants.
- Easy to clean after use.



General information			
Overall Dimensions	3000 x 2000 mm	Handling and Installation	Can use lifting hooks, slings, eye bolts or forklifts, vacuum lifting equipment.
Thickness	Total 47.5 mm, Core 38 mm	Connection	Using standard M16 bolts with steel or flexible straps. Steel reinforced connection points.
Useable Surface Area	6 m²	Recycling	100% recyclable
Weight	235 kg	Safety	Surface structure designs provide excellent traction for vehicles
Material	Recycled HDPE	Environmental	No liquid absorption and chemically inert. Easy to clean/decontaminate
Colour	Black (standard), other colours optional subject to minimum order quantity	Load bearing capacity	Ideal for supporting vehicles and equipment up to 150 tonnes*
Transport	Standard high cube 40 feet container 80 mats, Truck standard EU 96 mats	Fire Rating	UL 94HB

* Load capacity is dependent on ground conditions.

ISOTRACK L SERIES

PROTECT — BE SAFE

LIGHTWEIGHT TEMPORARY ACCESS AND GROUND PROTECTION MAT

Isotrack L series man-handable mat provides safe, temporary access, work areas,

and protection over soft ground conditions and hard surfaces. Two-person lift for easy handling and installation.



APPLICATIONS-MAIN SECTORS

- Utilities
- Construction and civil engineering
- Drilling contractors
- Transmission
- Renewable energy
- Events
- Emergency access
- Temporary road and work areas
- Hard and soft landscaping work
- Sports facilities and recreational grounds
- Pedestrian walkways
- Any project requiring safe temporary access for vehicles, pedestrians and equipment



KEY BENEFITS

- Man-handable mat – two person lift and easy handling using the hand cut-outs or hand grips
- Fast and easy to install using a choice of connection options
- Solid, compression-moulded high performance thermoplastic material resistant to chemicals and oil and is UV protected
- Flexible but tough and durable mat for long life use
- 100% recyclable at end of life

KEY INFORMATION AND FEATURES

- Each mat has two different, excellent traction surfaces for safe movement of vehicles and pedestrians.
- One surface has the market leading Isotractor™ design for safe vehicle operation in dry or wet conditions.
- Unique elongated connector hole design to enable adjustment if thermal expansion or contraction occurs.
- Customer logo option



SAFETY AND PERFORMANCE



- Cost effective and safe option compared to plywood – will not warp or rot.
- Only mat with elongated connection holes – prevent trip hazard when connected mats expand in high temperatures.
- Isotraction™ surface designed is based on tyre manufacturer traction research and has been independently tested to demonstrate superior grip for vehicles compared to other mats.
- Prevent vehicles and workers getting bogged down – avoid costs associated with down time.
- Avoid ground reinstatement costs



General information			
Overall Dimensions	2410 x1200 mm	Handling and Installation	Handhold cut-outs and hand grips for easy handling – two-person lift. No specialist tools or equipment required.
Thickness	Total 20 mm, Core 12 mm	Recycling	100% recyclable
Useable Surface Area	2,89 m²	Safety	Surface structure designs provide excellent traction for vehicles
Weight	36 kg	Environmental	No liquid absorption and chemically inert. Easy to clean / decontaminate
Colour	Black (standard) Other colours subject to minimum order quantity	Load bearing capacity	Ideal for supporting lighter vehicles and equipment up to 20 tonnes on softer ground and more than 80 tonnes on firm ground*
Transport	Standard high cube 40' container 560 mats, Truck standard EU 650 mats	Fire Rating	UL 94HB

* Load bearing capacity is dependent on ground conditions.



ISOKON
INNOVATIVE PLASTICS SOLUTIONS

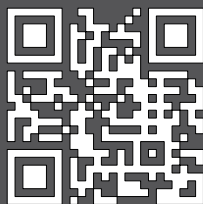
Isokon d.o.o.

Industrijska cesta 16
3210 Slovenske Konjice
Slovenia

+386 (0)3 757 11 00

sales@isokon.si

www.isotrack.eu



- * No reproduction of product photographs, drawings or images is permitted without the prior written approval of Isokon.
- * The information contained herein is based on current knowledge and does not guarantee properties or performance of the product under all conditions.
Refer to Isokon Standard Terms and Conditions.